

LINEAR MOTION Product Guide

Linear Guide Systems | Ball Screws | Actuators | Screw Jacks
LinearChain | Spline & Screw Shafts | Gears + Rack & Pinions



0800 338 833



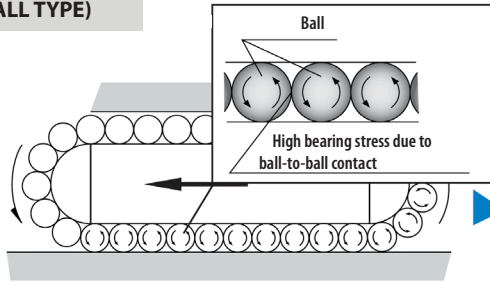
www.saecowilson.co.nz



WE ARE MOTION.

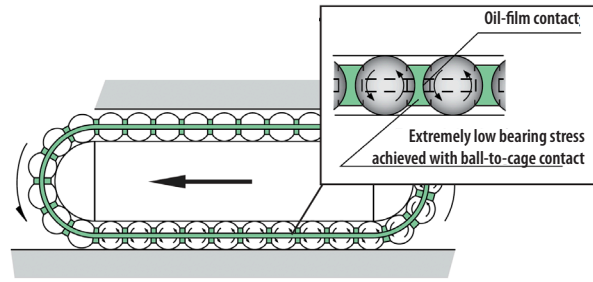
LM GUIDE WITH CAGED BALL TECHNOLOGY

CONVENTIONAL TYPE (FULL BALL TYPE)



Conventional structure

CAGED BALL TYPE



Caged Ball structure

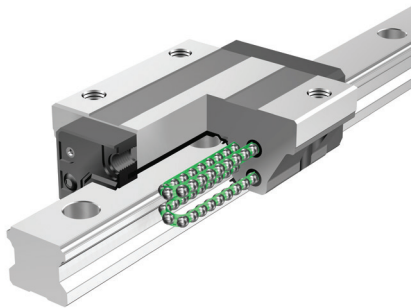
THK'S patented cage ball technology has taken LM guides to new levels of performance and reliability.

- Low noise
- Reduced friction
- Smoother running
- Excellent high speed performance
- Dynamic capacity increased by 30%
- Extend life by 2.2 times
- Superior lubrication
- Reduced maintenance

SHS FOUR WAY EQUAL LOAD TYPE

EQUAL LOAD TYPE LM GUIDE SHS

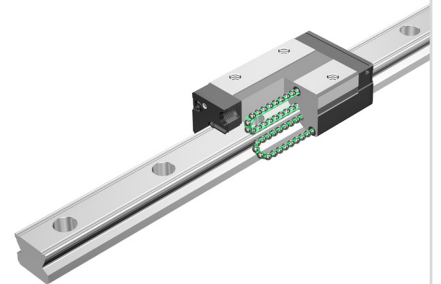
Global dimension standard. Suitable for loads in all orientations.



SSR LM GUIDE WITH CAGED BALL TECHNOLOGY

RADIAL LOAD TYPE LM GUIDE SSR

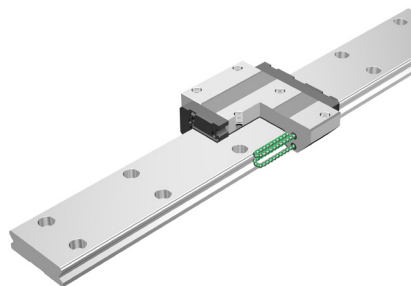
- Most economical type
- Low mounting height
- Compact design
- More forgiving of mounting error



SHW WIDE, LOW GRAVITY CENTRE TYPE

WIDE LM GUIDE SHW

Four way equal load type. Wide, low gravity centre suitable for moment loads and single rail configurations.



SKR LM GUIDE ACTUATOR

SKR LM GUIDE ACTUATOR

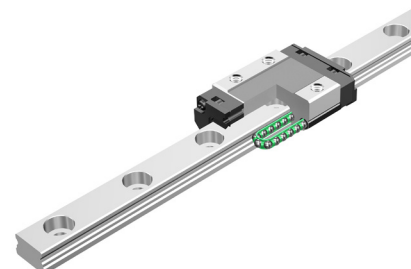
The linear motion guide and the driving ballscrew are integrated so that space-saving, high rigidity and high accuracy are possible.



SRS MINIATURE LM GUIDES

MINIATURE LM GUIDE SRS

Ultra compact miniature guide suitable for loads in all directions available in standard or wide type.

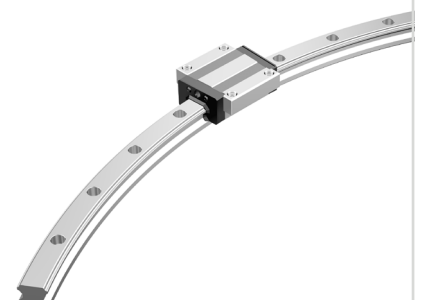


HCR CIRCULAR MOTION TYPE

TYPE HCR GUIDES IN CIRCULAR MOTION

HCR is based on the service-proven LM Guide type HSR that is capable of supporting loads in all orientations.

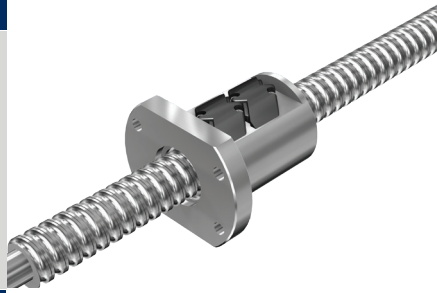
- Segments and full circles



ROLLED BALL SCREWS

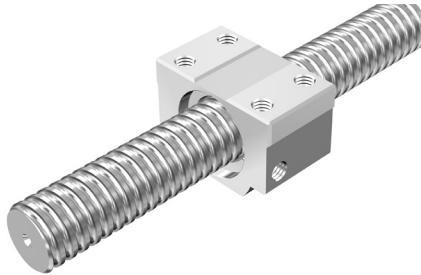
BTK-V

- Standard lead, flange mount nut, available in both right and left hand configuration
- Improved recirculation tube design maximises allowable speed



BNT

As mounting holes are machined on the square pad of the nut, compact mounting on the machine is possible.



BLK, WTF

Large lead rolled ball screws for high-speed feed. Designed to meet the needs of high speed automated machinery.

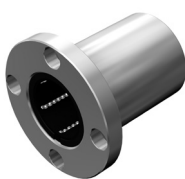
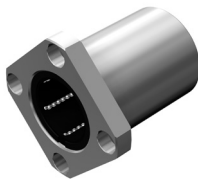


LINEAR BALL BUSHINGS

LM, LME, LMB

LMK

LMF



Complete range including standard, open and self aligning types, also available in stainless steel.

Square Flange type. In comparison to the round flange type, the flange figure is smaller, so that more compact design is possible.

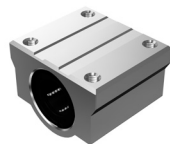
Round flange type. As this type can be bolted directly to the housing, mounting is simple.

LM - Asian Ball Bush • LME - European Standard Ball Bush
LMB - Imperial Standard Ball Bush

LM CASE UNIT AND SHAFT SUPPORT

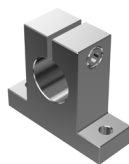
SC

This unit can be mounted simply by bolting it to a table.



SK

Lightweight shaft-supports made of aluminium.



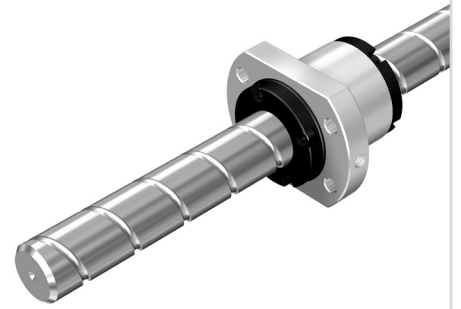
Hardened and ground linear shafting

- Carbon steel
- Chrome plated
- Stainless steel



PRECISION BALL SCREWS

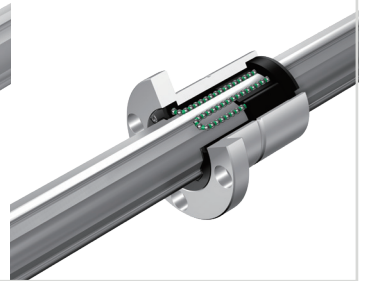
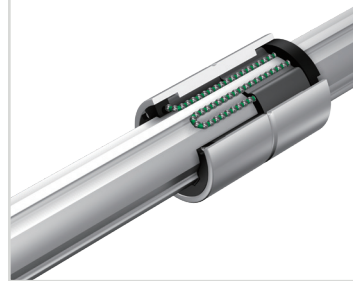
- Precision ground ball screws for high accuracy and repeatability
- Preloaded for zero backlash
- Preloaded
- Full complement ball and caged ball types available
- Finish machined assemblies ready to mount to standard support units



BALL SPLINES

SLS/SLF

- Caged ball design
- Large torque load can be transmitted via the six ball rows
- Zero angular backlash with a single spline nut

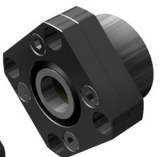
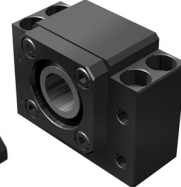
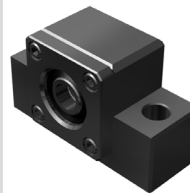


BALL SCREW SUPPORT UNITS

EK/EF

BK/BF

FK/FF



TRAPEZOIDAL SCREW SHAFT AND NUTS SPLINE SHAFTS AND NUTS

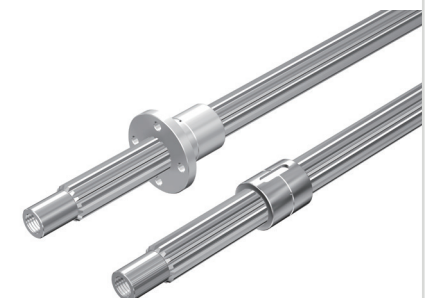
DC/DCM

- Trapezoidal 30 degrees precision rolled lead screw
- Special die cast high performance alloy nuts



DP/DPM

- Plain splines
- Minimum backlash
- High torque ratings



NH SERIES

- Large ball diameter
- Highest load rating
- Longer fatigue life
- High speed performance



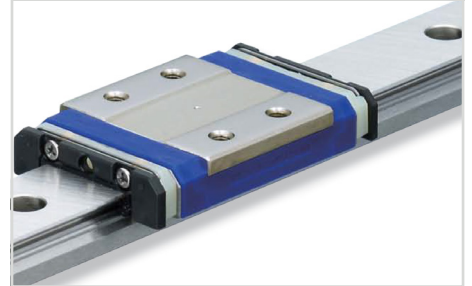
NS SERIES

- Compact
- Low profile shape



PU/PE SERIES

- Miniature series
- Stainless steel as standard
- Narrow or wide type
- Interchangeable - allows for random matching



K1 LUBRICATION UNIT

NSK K1 lubrication unit is a porous resin device filled with a large volume of lubricant oil. The oil gradually seeps out, thereby lubricating the linear guide over a long time. Available for linear guides, ball screws and monocarriers.

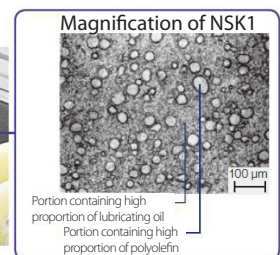
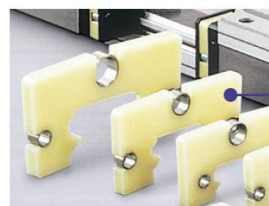
- 10,000 km / five years maintenance free operation
- Can be supplied separately
- USDA H1 Food grade version

YOU CAN ACHIEVE THE FOLLOWING

- Long-term maintenance-free (cost reduction)
- Long life under severe environments
- Environmentally sound clean lubrication system

Lubricant oil and polyolefin combined and molded into one unit

- Containing 70% of lubrication oil
- Supplies lubricant oil for long periods of time
- Service life: in excess of 100,000 hours



BALL SCREWS AND MONOCARRIERS

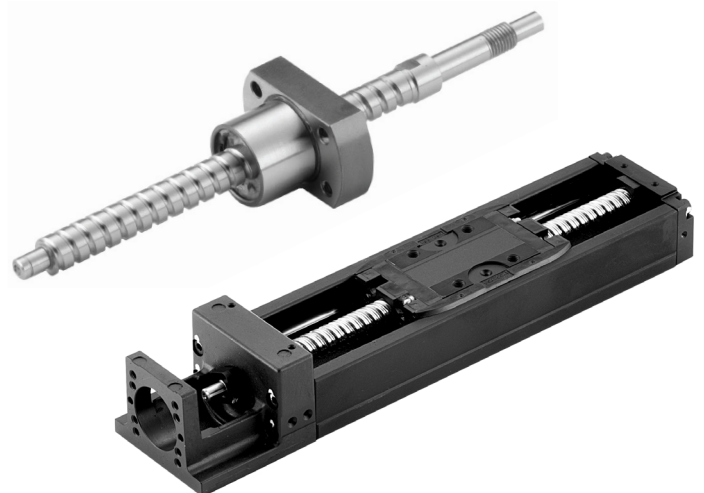
Exceptional production and quality control techniques have enabled NSK to become the largest global manufacturer of ball screws in the world.

BALL SCREWS

- Rolled and ground screws
- Standard and compact sizes
- Tough steel for high load applications
- High performance coatings for special environments
- Ball screw support bearings
- Ball screw support units

MONOCARRIERS

- All-in-one structure (ball screw, linear guide and base integrated)
- Ball type
- Roller type Toughcarrier for high loads and moment loads



LINEAR LINE

COMPACT RAIL

- Self-aligning cold drawn induction hardened and ground raceways
- High speed low noise

CURVILINE

- Track roller guide for non-linear movements
- Constant or variable radii

X-RAIL

- Simple and economical
- Zinc plated and stainless steel for ultimate corrosion resistance
- Optional hardened with ROLLON NOX Treatment

SPEEDY RAIL

- Self-supporting linear rail in extruded aluminium with steel rollers coated in plastic



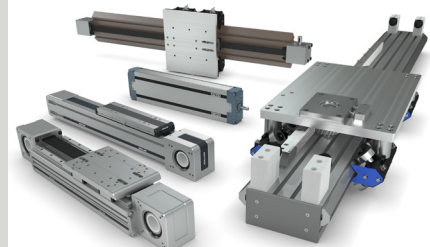
TELESCOPIC LINE

- Hardened raceways
- High load capacities
- High rigidity
- Resistant to shock/vibration
- Suitable for mobile applications



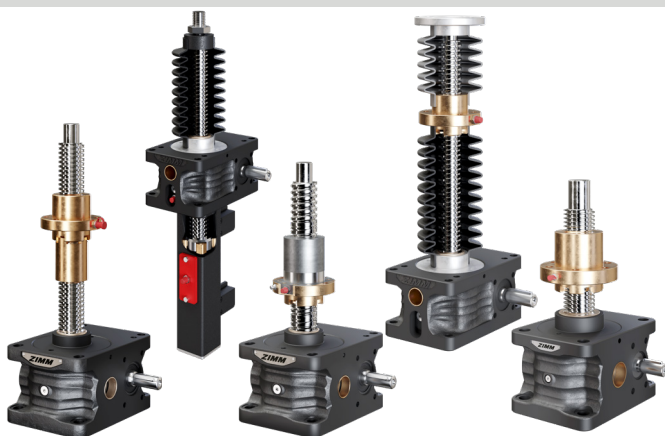
ACTUATOR LINE

- Linear actuators with different drive and guide configurations
- Belt driven
- Ball screw
- Rack and pinion
- Robot seventh axis
- X, Y, Z axis configurations



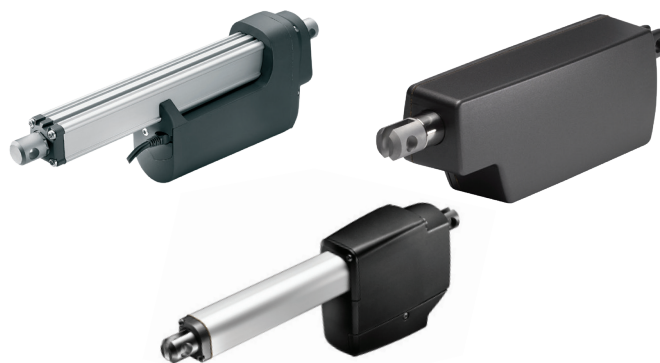
SCREW JACK BUILDING BLOCK SYSTEM

- Pioneering product design
- Most extensive modular system in the industry
- Standard anti-corrosion protection
- Online system configurator
- Massive time saving in design
- Heavy load actuation
- Accurate and controllable
- Can replace hydraulics



ELECTRIC ACTUATORS

- 20kg - 1500kg capacity
- 20mm - 1200mm stroke
- Sophisticated feedback options
- Integrated controller (IC)
- MODBUS, CANBUS
- Low maintenance
- IECEx options for explosive atmospheres



IC INTEGRATED CONTROLLER



LINEARCHAIN

- LinearChain can push and pull
- Ideal where the available space is insufficient for a solution with "normal" linear drives
- The chain can be wound up and stored
- Ideal for long strokes
- Suitable for high and low temperatures
- Up to 3500kg force per chain
- Multiple units can be synchronised for very heavy loads



LINEAR ACTUATOR MINI

- Compact design - integrated in one housing
- Five sizes with lifting forces up to 2650kg
- Stroke speed up to 136mm/sec
- Stroke length up to 500mm
- Full stainless steel body
- IP65 ingress protection
- ATEX 95 explosion proof option
- Optional mechanical override protection



- Spur gears
- Worm gears
- Bevel gears
- Rack and pinion
- Miter gears
- Internal gears
- Gearboxes



An in-house cutting facility offers a fast, reliable and high quality finish to customers specifications.
A full machining service is also available for machine to standard or customers specifications.

SAECOWILSON MARKET LEADER IN LINEAR MOTION

LEADING BRANDS • LARGEST STOCK • COMPREHENSIVE RANGE



NORTH ISLAND

SPANHAKE ENGINEERING SUPPLIES KAITIAI

36 Matthews Ave
kaitiaia@saecowilson.co.nz
Ph: (09) 408 0960

WHANGAREI

28 Port Road
whangarei@saecowilson.co.nz
Ph: (09) 430 0105

NORTH SHORE

Unit C, 21 Porana Rd, Wairau Valley
northshore@saecowilson.co.nz
Ph: (09) 444 6129

AVONDALE

607 Rosebank Road, Auckland
avondale@saecowilson.co.nz
Ph: (09) 825 1037

PENROSE

131 Station Road, Auckland
penrose@saecowilson.co.nz
Ph: (09) 579 3199

EAST TAMAKI

49B Springs Road, Auckland
easttamaki@saecowilson.co.nz
Ph: (09) 274 4596

WIRI

71A Wiri Station Rd, Manukau, Auckland
wiri@saecowilson.co.nz
Ph: (09) 263 4864

PUKEKOHE

89 Manukau Road
pukekohe@saecowilson.co.nz
Ph: (09) 237 1511

TAURANGA

17 Newton St, Mt Maunganui
mtmaunganui@saecowilson.co.nz
Ph: (07) 575 6179

HAMILTON

24 Lincoln Street, Frankton
frankton@saecowilson.co.nz
Ph: (07) 847 8773

ROTORUA

Cnr Old Taupo Road & Pururu St
rotorua@saecowilson.co.nz
Ph: (07) 348 5169

NAPIER

38 Austin Street
napier@saecowilson.co.nz
Ph: (06) 843 0027

HASTINGS

Unit 1, 822 Omaha Road
hastings@saecowilson.co.nz
Ph: (06) 876 0345

NEW PLYMOUTH

161 Gill Street
newplymouth@saecowilson.co.nz
Ph: (06) 758 5326

PALMERSTON NORTH

639 Tremaine Ave
palmerstonnorth@saecowilson.co.nz
Ph: (06) 356 9561

PETONE

122 Hutt Rd, Petone, Wellington
wellington@saecowilson.co.nz
Ph: (04) 568 3189

SOUTH ISLAND

NELSON

79 Quarantine Road, Annesbrook
nelson@saecowilson.co.nz
Ph: (03) 547 4888

HORNBY

172 Waterloo Rd, Christchurch
hornby@saecowilson.co.nz
Ph: (03) 348 7171

SYDENHAM

39B Gasson Street, Christchurch
sydenham@saecowilson.co.nz
Ph: (03) 379 3732

CHRISTCHURCH

227 Annex Road, Middleton
christchurch@saecowilson.co.nz
Ph: (03) 338 8533

DUNEDIN

15 Thomas Burns Street
dunedin@saecowilson.co.nz
Ph: (03) 477 8565

INVERCARGILL

55 Leet Street
invercargill@saecowilson.co.nz
Ph: (03) 211 8111